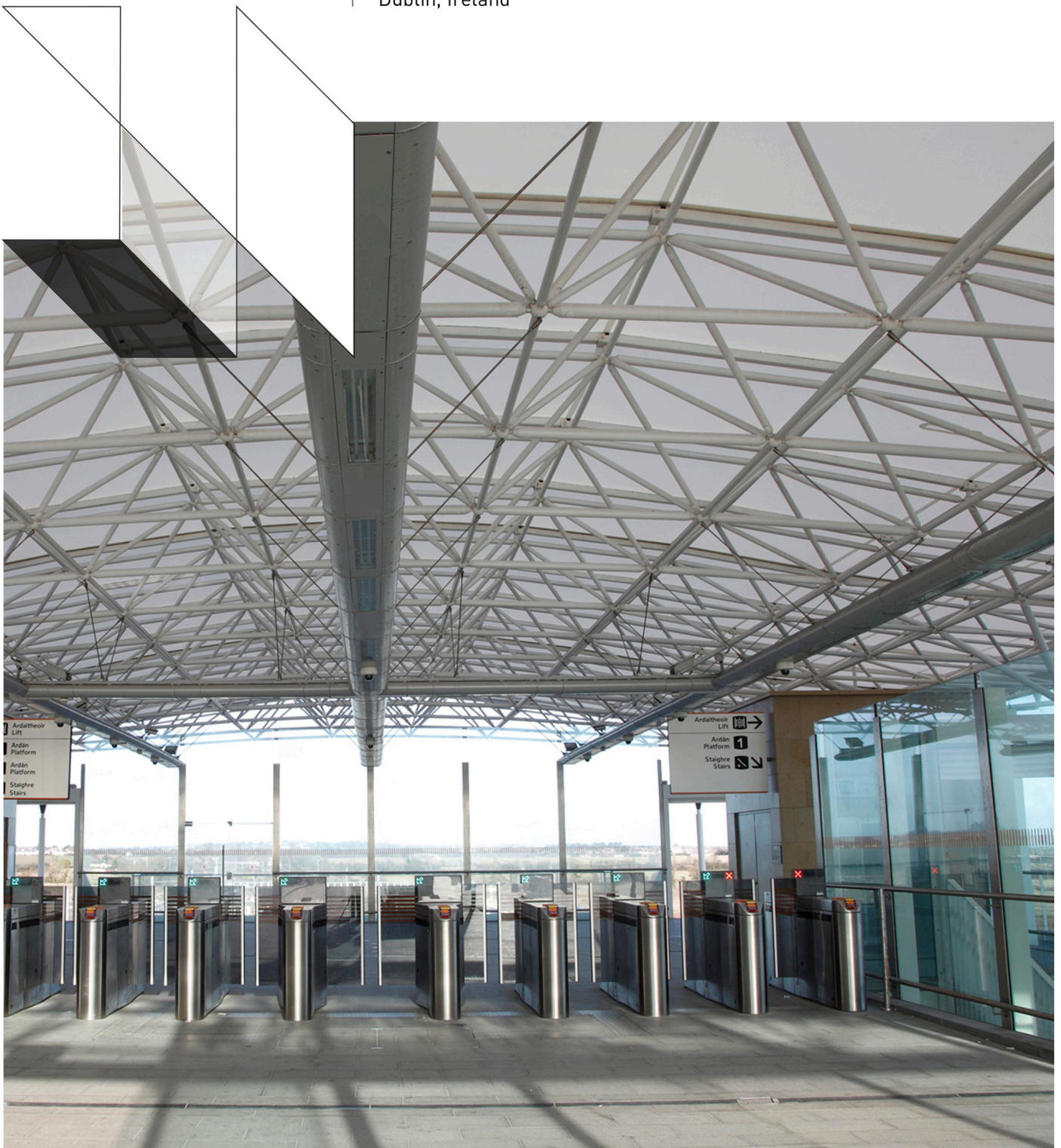


Clongriffin Rail Station
Dublin, Ireland



Specifications

Project Clongriffin Rail Station

Application Roof

Location Dublin, Ireland

Size 10,765 ft² / 1000 m²

Architect Murray O'Laoire Architects

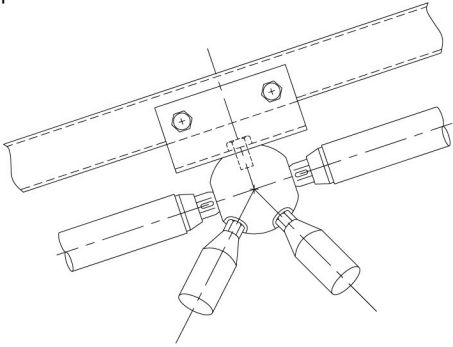
Novum Systems

Structural

KK Galvanised and powder coated steel tubes and nodes create the space frame structure. Hollow rectangular purlins support the membrane.

Membrane

SSM Stressed Skin PTFE fabric cladding designed with hoist flaps to allow the assembled structure to be lifted into position.



Design Solution

Novum was appointed to this project for our unique capability to engineer and fabricate the spaceframe and membrane systems in house. Due to an accelerated schedule and build over an active track, Novum designed the three dimensional lightweight KK-System structure with the rigidity necessary to lift the entire PTFE clad 1000m² canopy with a crane. To accommodate the program the structure was assembled on an adjacent plot of land and lifted into position during a four hour night time rail possession. The mechanically fastened pre engineered system ensured that site assembly was rapid as required by the fast track program. The award winning project was completed on time.